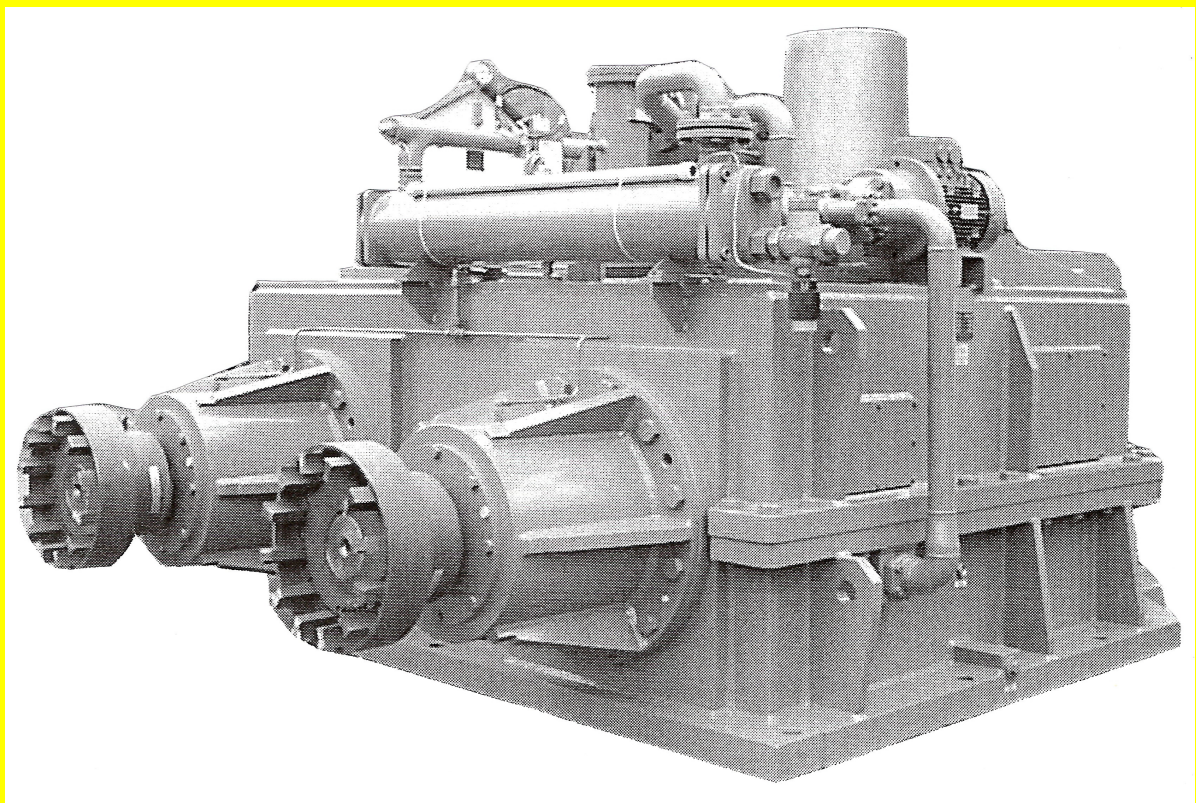


# Ingenieurbüro OEHMICHEN GmbH

**Engineering Competence**

**The Key to Your Success**



office:  
04425 Taucha  
Richard-Bogue-Straße 2

phone: 034298/733080  
fax: 034291/733080  
mobil: 0177/3636100

mail@ib-oehmichen.de  
www.ib-oehmichen.de

## **Our Company:**

- 1992 foundation of the Ingenieurbüro GERSTEL Leipzig GmbH as an independent engineering office for gearbox design and steel construction
- 1998 the company continues as Ingenieurbüro GRAUPE GmbH in Borsdorf near Leipzig
- 2003 foundation of the Ingenieurbüro OEHMICHEN GmbH (engineering office OEHMICHEN Ltd),  
takeover of the Ingenieurbüro GRAUPE GmbH
- 2015 move from Borsdorf to the new office in Taucha
- 2023 20th company anniversary
- today we assist you with advice, design and calculation of components in the field of motive power engineering, materials handling equipment, process plant construction and special purpose machinery

## **Our Team:**

Our team- these are:

two Bachelors of Engineering with over 30 years of experience in design of gearboxes and special purpose machinery,

one technical draughtswomen with many years of experience, too

and our partners who support our work with additional specialist knowledge and capacities

## **Our Software:**

CAD-systems: AutoCAD Mechanical  
Autodesk Inventor  
Solid Edge  
other systems on request

Calculations: e-Assistant  
TBK  
in-house software for special applications

## Our Services:

- development, calculation and design of special purpose and serial gearboxes as well as any mechanical parts according to DIN, ISO, AGMA, KTA and other specifications
- design and calculation of helical and bevel-helical gear pairs, worm gears and planetary gear sets
- engineering layout supporting your offer preparation
- technical calculation of gearboxes and mechanical components acc. to existing drawings
- design of TGL-gearboxes and any kind of existing gearboxes acc. to fitting dimensions given
- optimizing existing designs for increased power or life time
- supply of complete manufacturing documents (shop drawings, parts list)
- weldment design for machine construction
- change of welding parts into cast design and vice versa
- development, calculation and design of components for plants, cranes and handling equipment acc. to customers specifications
- FEM of components and evaluation acc. to FKM-guidelines
- measuring of used parts and supply of drawings for reproduction
- supply of operating instructions
- expertise and measurement of gearboxes on site
- expediting

## Our Customers:

- ANDRITZ Metals Germany GmbH, Hemer
- ASUG Getriebe und Zahnradfabrik GmbH, Leipzig
- Baß Antriebstechnik GmbH, Gebsattel
- BF Systemtechnik GmbH & Co. KG, Berlin
- Danieli Germany GmbH, Meinerzhagen
- DESCH Antriebstechnik GmbH, Arnsberg-Huesten
- Ernst Schad GmbH, Dortmund
- Flender Industriegetriebe GmbH, Penig
- Getriebebau Nossen GmbH, Nossen
- Getriebe Technik Füllgraf GmbH, Witten
- GTD Getriebetechnik Dessau GmbH Dessau
- Helmerding hiw Maschinen GmbH, Bad Oyenhausen
- Kumera Getriebe GmbH & Co. KG, Troisdorf Spich
- Lenord, Bauer & Co. GmbH, Oberhausen
- M-A-S Maschinen- und Anlagenbau Schulz GmbH, Pucking
- Momac GmbH & Co. KG, Moers
- Nicolai Gesellschaft für Zweirad- und Maschinenbau mbH, Elze/Mehle
- Pekrun Getriebebau GmbH, Wuppertal
- PW Hueber Sondergetriebebau & -service GmbH, Kirn
- Siebenhaar Antriebstechnik GmbH, Hofgeismar
- Siemens Geared Motors GmbH, Tübingen
- SynchroTech GmbH Antriebstechnische Systeme, Fellbach
- ThyssenKrupp Stahl AG, Duisburg
- Voith Turbo BHS Getriebe GmbH, Sonthofen

## **Our References:**

### **Fabrication and Finishing of Metal**

- coilers, pinion stand gears for plate rolling mills (with or without shifting), shear gearings and straightening roller gearboxes for strip processing lines
- axial roller and main roller gears for ring forging plants
- distributor gear for stretch-bend-levelling lines
- converter turn-down gearbox, roller table drives
- speed control gearbox for sizing/stretch-reducing mill with 28 stands
- scoop, crust breaker, brush, quick change attachment, cover handling, bath covering unit and anode tongs for aluminium bath crane

### **Cranes and Hauling Equipment**

- hoisting and precision hoisting gears, travelling, boom hoisting, luffing and slewing gear units for harbour and foundry cranes
- gearboxes for nuclear power plants including documents for preliminary examination
- bunker reclaimers for power plants
- bucket wheel drive, caterpillar drive and conveyor drives for open pit mining
- pot tending trolley for aluminium bath crane

### **Extruders and Plastics Processing**

- extruder and kalender gearboxes for tire production
- mixer drive for rubber production
- rack-and-pinion gears for plastic moulding
- splitter gearboxes for twin screw extruders with parallel action used in powder coating production

### **Test Bench Equipment, Industrial and Special Purpose Gearboxes**

- design of all kind of gearboxes acc. to TGL-standards for repairs and replacement
- shifted and non-shifted high-speed test bench gearboxes mounted in antifriction, plain and sleeve bearings (upto 30.000 rpm)
- draw work gearboxes for land drilling rigs
- planetary gearboxes for water turbines, agitators and particle board presses
- planetary helical gearbox for primary crushers
- counter-rotating twin screw extruder drives for recycling plants
- development of planetary gear line
- test bench for serial check of planetary gearbox line
- test bench for jacking frame hoisting unit

### **Agriculture**

- angular distributor gearbox for hay tedders
- portal travelling gearbox for maize chopper
- helical bevel gearbox for straw baler

### **Small gearboxes, Precision Mechanics**

- development of gearbox series for viscose pumps
- optimizing of adjusting drive for packaging machines
- development of planetary gearbox series

### **Repair and Service**

- calculation and preparation of drawings for winding gear of a drum gate
- gear tooth calculation for various frame presses
- measurement and supply of drawings for gearing replacement parts
- manufacturing drawings for ship-to-shore crane repair